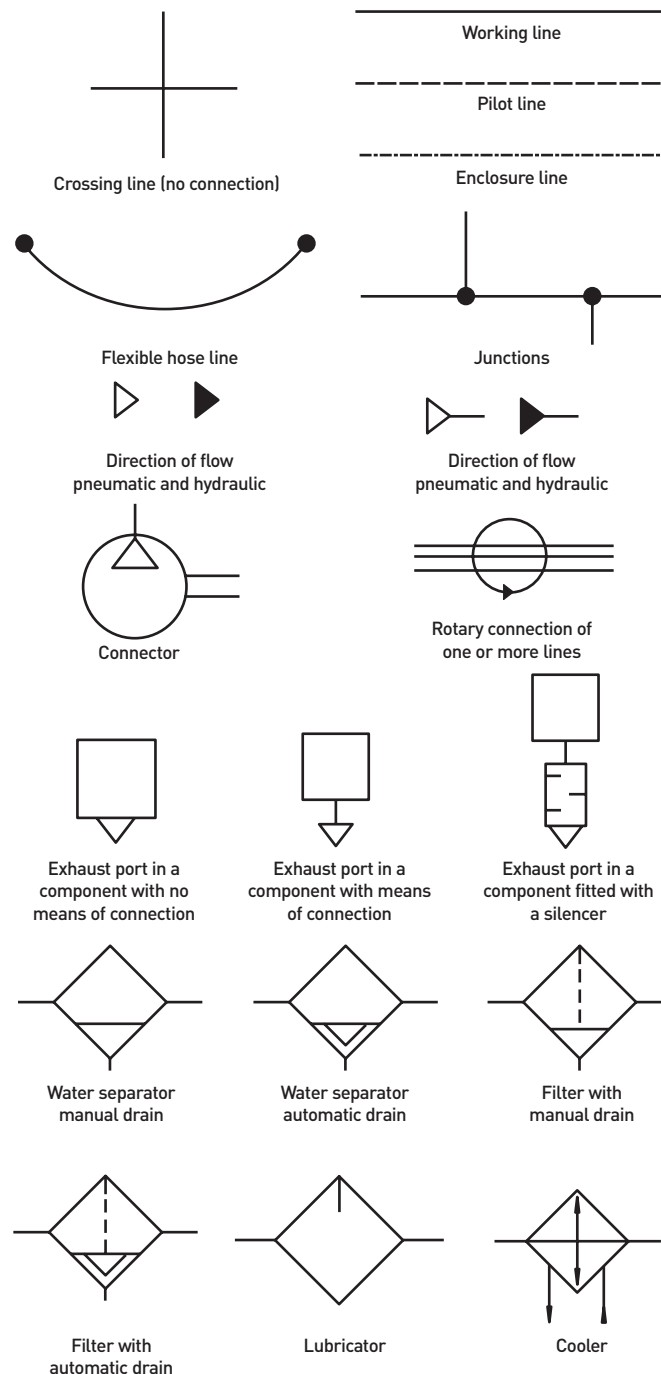
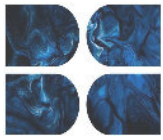


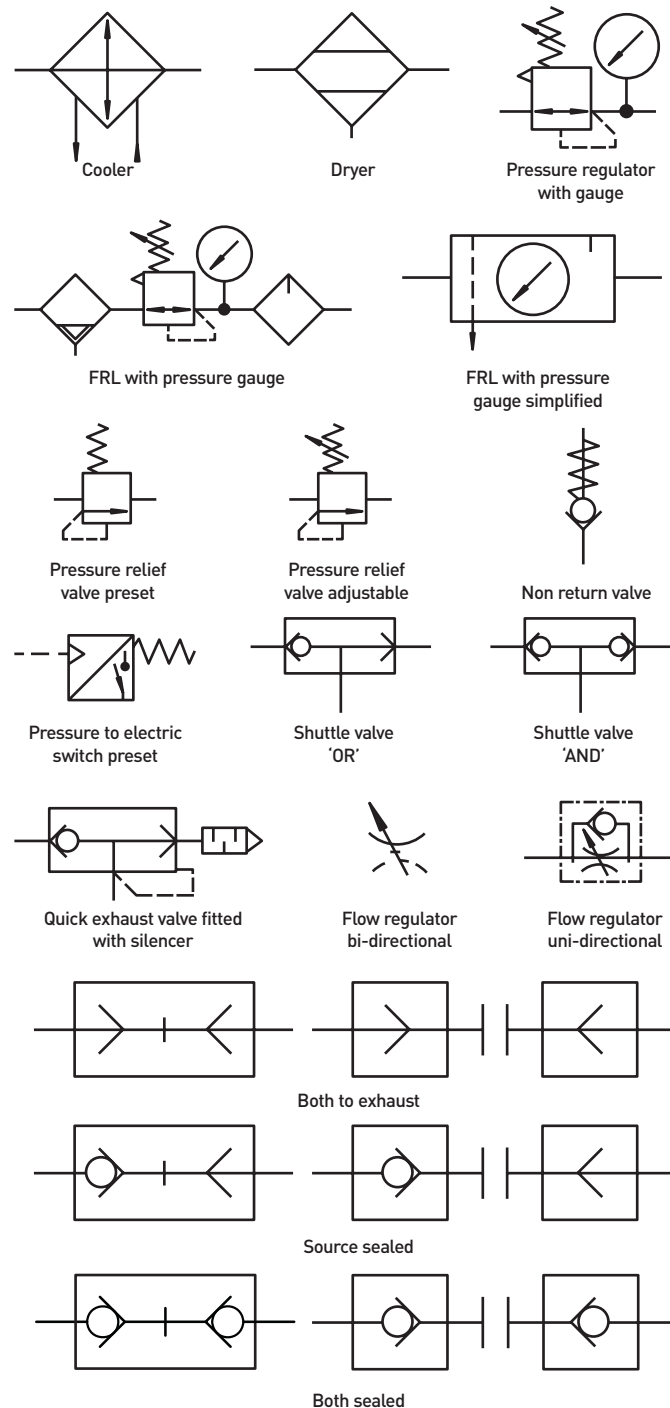
General & Air Line Equipment Pneumatic Symbols

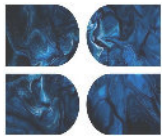


General & Air Line Equipment Pneumatic Symbols

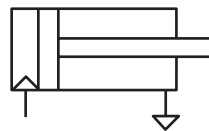


Air Line Equipment & Accessories Pneumatic Symbols

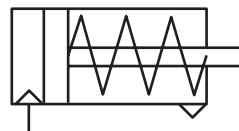




Actuator Pneumatic Symbols



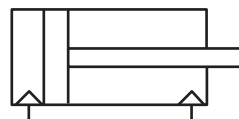
Single acting load returns



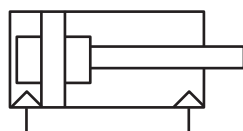
Single acting push



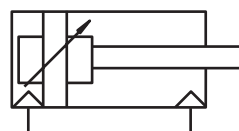
Single acting pull



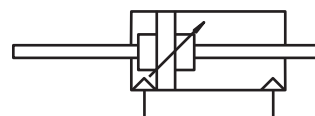
Double acting no cushion



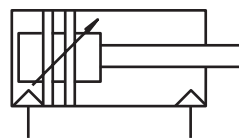
Double acting fixed cushion



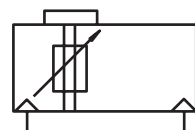
Double acting adjustable cushion



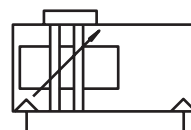
Double ended rod



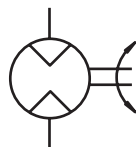
Magnetic piston with cushioning



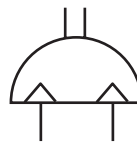
Rodless with cushioning



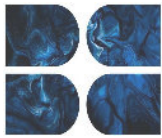
Rodless with magnetic piston and cushioning



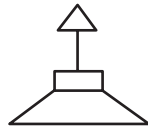
Rotary motor bi-directional



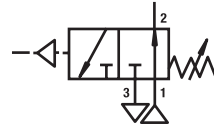
Semi-rotary actuator



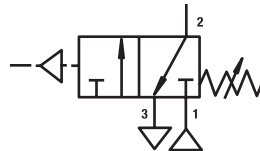
Vacuum Pneumatic Symbols



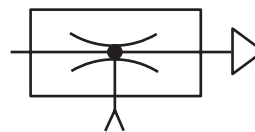
Cup



Vacuum/pneumatic switch
adjustable normally open



Vacuum/pneumatic switch
adjustable normally closed



Vacuum pump

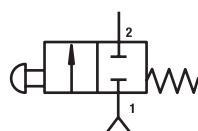


Vacuum/electric switch
adjustable normally open

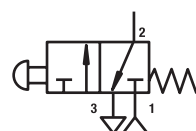


Vacuum/electric switch
adjustable normally closed

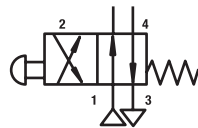
Control Valve - Port Marking Pneumatic Symbols



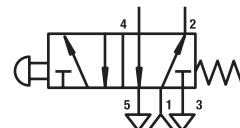
2/2 valve



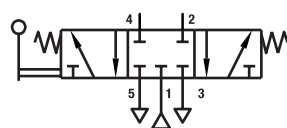
3/2 valve



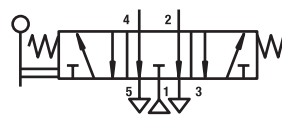
4/2 valve



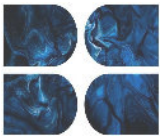
5/2 valve



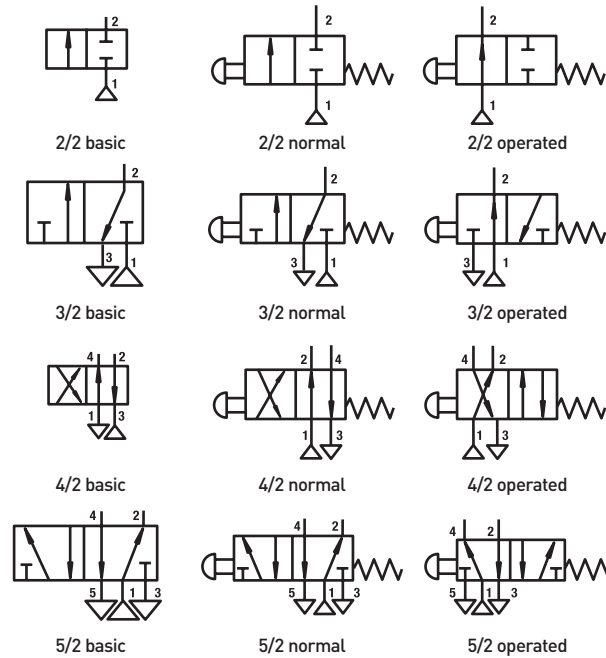
5/3 valve, all ports sealed



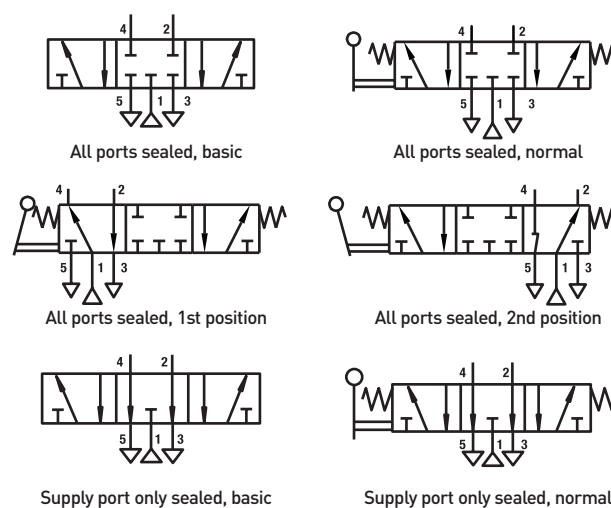
5/3 valve,
supply port only sealed

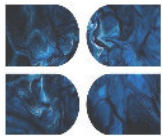


Control Valve - Port Marking Pneumatic Symbols

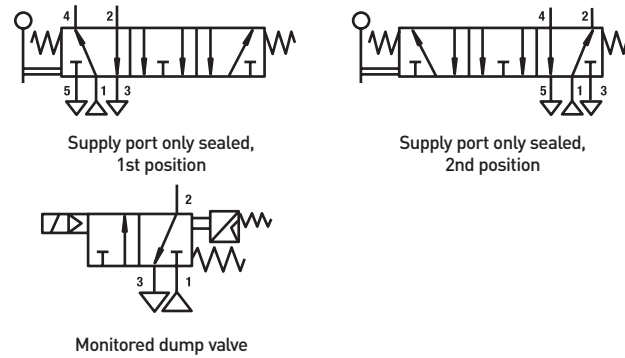


Control Valve - 5/3 Valve Pneumatic Symbols





Control Valve - Port Marking Pneumatic Symbols



Valve Operator Pneumatic Symbols

